

Roof level
Rolling and Solarised Roofscape
 The roofscape slopes in alternating directions to create an undulating profile reminiscent of the rolling topography of Bidadari. The form also acts as an armature for solar panels, energising the precinct with renewable clean power.

10th storey
Sky Gardens for Bird Watching
 Overlooking Bidadari Park, these roof gardens offer breathtaking views, enabling residents to truly reconnect with nature.

3rd storey
Necklace of Courtyard Gardens
 Entering from the busy sidewalks of Upper Serangoon Road, one is invited into the first series of courtyard gardens themed as Active Meadows featuring activity lawns, community gardens, butterfly and sensory gardens. On the eastern side of the village street, the gardens comprise lush trees and streams to evoke closeness to nature. The elevated courtyard gardens are linked via garden bridges inspired by the former Alkaff Gardens.

2nd storey
Elevated Green Breezeway
 A pair of community promenades line the village street on both sides. Apart from serving as a covered walkway on the 1st storey, the promenades on the 2nd storey also string together a series of urban verandahs that overlook the village street, where residents can come together or sit and enjoy the view.

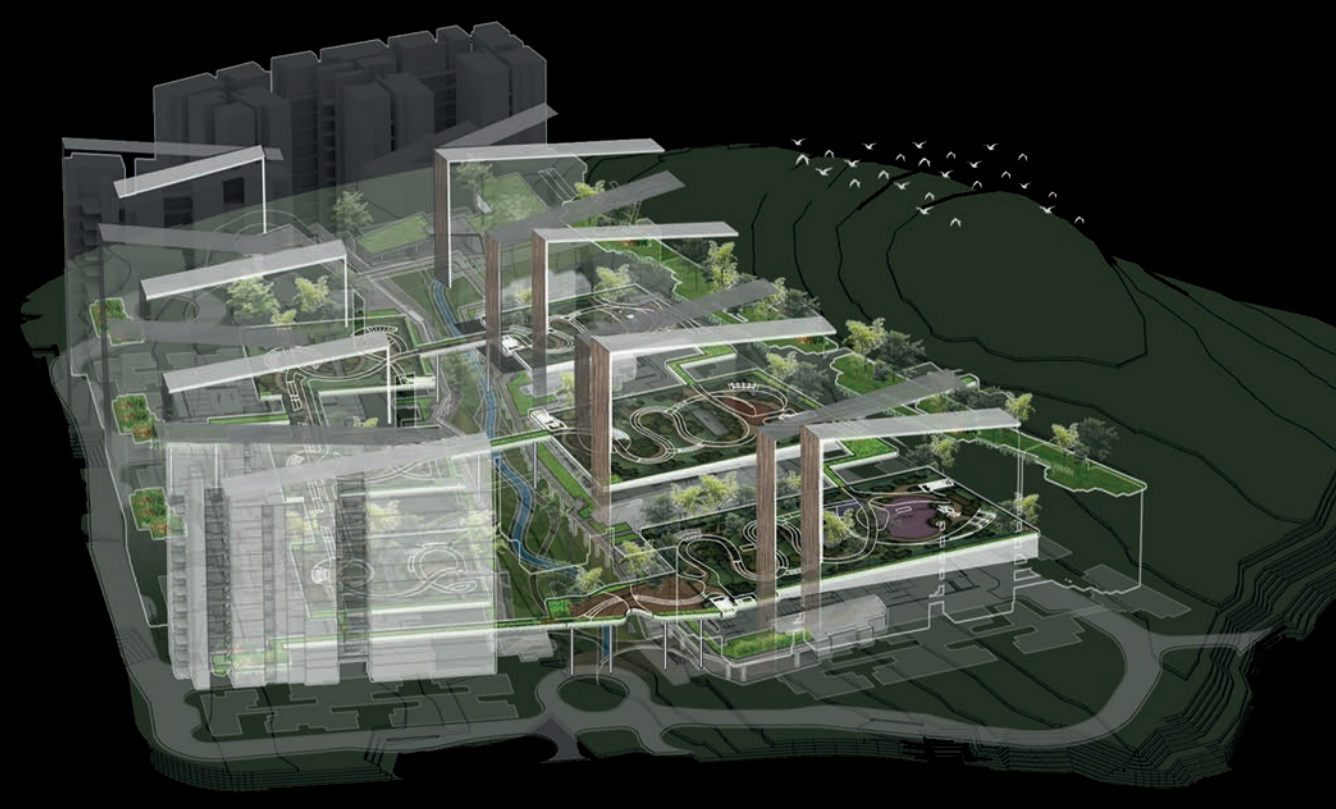
Ground level
Our Village Street
 At the heart of the precinct lies a tranquil green valley, where residents can take leisurely strolls and enjoy the experience of being amidst lush greenery.

Invisible Infrastructure
 Low-rise car parks that are sited between residential blocks and hidden under the courtyard gardens offer residents direct access to their homes. Internal roads are pushed to the fringes, so that the heart of the precinct remains car-free, and a safe environment for all.

Topography
 The existing topography is a natural valley that slopes up towards Upper Serangoon Road and Bidadari Hill Park. The morphology of the development accentuates this undulating terrain by retaining the existing valley and inserting a series of green terraces that slope up towards the Hill Park.



View of central valley spine with interconnected landscape trails across multiple levels



- Legends**
- 1 Residential Block
 - 2 Roof Garden
 - 3 Central Valley
 - 4 Verandah Walk
 - 5 Garden Bridge
 - 6 Precinct Pavilion
 - 7 Bird-Watching Sky Garden



Courtyard roof gardens between residential blocks



Forested rooftop courtyards act as forecourts to the residential blocks



Bird-watching sky gardens facing Bidadari Hill Park